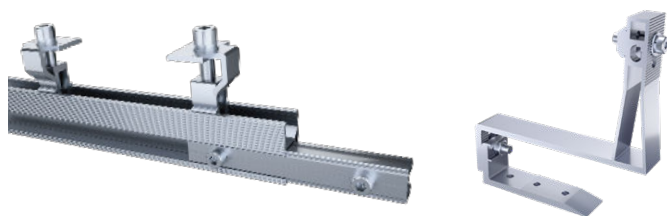




OVERVIEW

The aluminum tile roof solar mounting system offers a perfect solution for installation on tile roofing. The roof fastening is done using highly-resistant roof hooks, which are suitable for pantile, plain tiles and slate tiles. Systems are suitable for a wide variety of climatic zones.



RECOMMENDED FOOT SPACING (MM)

Wind Speed (m/s)	0<v≤20	20<v≤25	25<v≤30	30<v≤35
Snow Load (Kpa)				
0<s≤1	1600	1600	1600	1500
1<s≤1.5	1400	1400	1300	1300
1.5<s≤2	1300	1200	1200	1200
2<s≤2.5	1100	1100	1100	1100

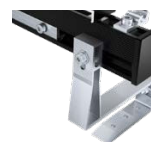
FEATURE

1. Clamp with a spring makes installation much easier and faster. Universal as mid clamp or end clamp.
2. Flexible options for both portrait and landscape orientations.
3. Adjustable to meet varying load requirements in different wind & snow zones.
4. Suitable for different types of roofings, such as pantile, plain tiles and slate tiles.

SPECIFICATION

System Name	Aluminum Tile Roof Hook Solar Mounting System
Roof Type	Tile Roof
Applicable Solar Module	Framed, 30~35mm Thick Panel
Panel Layout	Portrait/Landscape
Design Standard	BS EN1991
Material	AL-6005-T6 & SUS304 & EPDM
Color	Sliver
Warranty	10-year

INSTALLATION



Landscape

	Description	1-Panel	2-Panel	Description	4-Panel	6-Panel
1	 Rail 1250mm	2	0	Rail 4700mm	2	2
2	 Rail 2400mm	0	2	Rail 2350mm	0	2
3	 Rail Splice	0	0	Rail Splice	0	2
4	 Alu Tile Roof Hook	4	6	Alu Tile Roof Hook	8	12
5	 Universal Clamp	4	6	Universal Clamp	10	14
6	 Earthing Clip	2	2	Earthing Clip	6	10
7	 Grounding Lug	2	2	Grounding Lug	2	2
8	 Cable Clip	1	2	Cable Clip	4	6